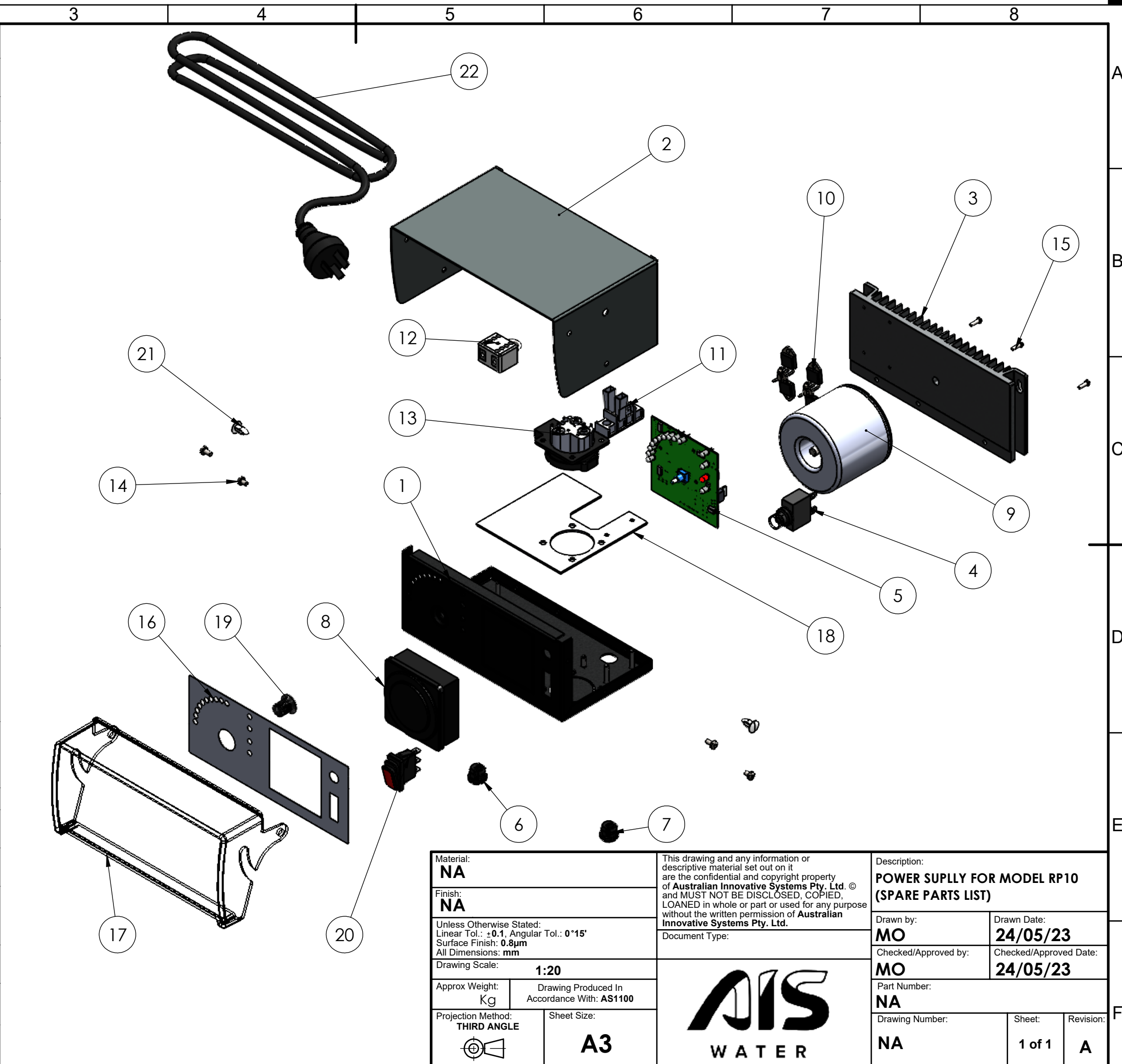


ITEM NO.	PART NUMBER	DESCRIPTION	QTY.
A 1	CHRP10U	Chasis Universal	1
2	TCRP10	Top Cover	1
3	HSRP10	Heatsink	1
4	CB3W	Circuit Breaker	1
B 5	AEACRP	Board for RP Series	1
6	CGS	Cord Grip (Cell Lead)	1
7	CGS1	Cord Grip (Power Cord)	1
8	TCFQ	Frontier Timer	1
C 9	TX80VA	Transformer	1
10	SCRJ	SCR Insulated "J"	4
11	MTBA	MAIN GGB-30-00 A2P Terminal Block Assy	1
12	PBL	Porcelain Block w/ Shunt	1
D 13	POW	Waterproof Pump Outlet w/ Socket	1
14	B-M4X6	Bolt - M4 x 6mm	4
15	S-ST58GAPHSS304	Self Tapping Screw 8GA x 1 1/4 PH ss304	3
16	DECALRP10TH	Decal for RP10 Pixie with timer (AU)	1
E 17	FCRP10	Front Cover	1
18	IPRP10AU	Insulation Plate	1
19	KNOBRP10	Knob PCB Control	1
20	SWRWR3	Power Switch 3-way	1
F 21	NYARROWCLIP	Nylon Arrow Clip	2
22	L240	Cable Assy(AUS)	1
	L240BLK-E	Cable Assy (EU)	



Material: NA		This drawing and any information or descriptive material set out on it are the confidential and copyright property of Australian Innovative Systems Pty. Ltd. and MUST NOT BE DISCLOSED, COPIED, LOANED in whole or part or used for any purpose without the written permission of Australian Innovative Systems Pty. Ltd.		Description: POWER SUPPLY FOR MODEL RP10 (SPARE PARTS LIST)	
Finish: NA		Drawing Scale: 1:20		Drawn by: MO	
Unless Otherwise Stated: Linear Tol.: ±0.1 , Angular Tol.: 0°15' Surface Finish: 0.8µm All Dimensions: mm		Approx Weight: Kg		Drawing Produced In Accordance With: AS1100	
Drawing Scale: 1:20		Projection Method: THIRD ANGLE		Checked/Approved by: MO	
Approx Weight: Kg		Sheet Size: A3		Checked/Approved Date: 24/05/23	
Projection Method: THIRD ANGLE				Part Number: NA	
Sheet Size: A3				Drawing Number: NA	
				Sheet: 1 of 1	
				Revision: A	